

Bird Monitoring in Regions

Bird Monitoring in the Burnett Mary NRM Region

Monitoring the Birds in Subtropical Habitats



Starter's Kit



Australian Government

Introduction

Welcome to the Bird Monitoring in Regions Project. Thank you for taking the time to get involved with this exciting new project. Your efforts are greatly appreciated.

Your region has been selected as a nationally important environmental hotspot; only ten such areas have been selected in Australia. It is through the work of members of the community, such as yourself, that we can most effectively monitor the environment in these important areas. There are many factors that affect the environment, and birds accurately reflect the effects of these processes – both good and bad – and by monitoring them we can determine the health of various habitats.

In this starter's kit you will find all you need to know about how to monitor the birds in your region. It includes instructions on the preferred method of surveys, maps of the survey areas, tips on birdwatching in the particular habitats encountered in your region, safety precautions and logistical suggestions to make birding easier and more rewarding and enjoyable.

Good birding!

The 2-hectare search and some tips on how to do one

- This is the preferred method of bird monitoring in your area.
- It involves searching a 2-hectare area for 20 minutes.
- The recommended shape for the two hectares is 100 metres x 200 metres (equivalent to about 5 acres). However, you should alter the shape of your search area to suit local habitats and conditions.
- Only record birds seen or heard **within** the 2-hectare area; birds seen flying over the search area can also be included.
- If you see a species which is not listed on the Atlas Record Form, add it to the 'Birds Not Listed' section at the end of the form, making sure to write its name, and its Atlas number in the box provided (refer to the species names and numbers in this Starter's Kit).
- As part of these surveys, we are asking you to count (or at least estimate the number of) all species of birds that you see during the survey (though only if you wish to; counting the birds is not compulsory). Numbers of birds should be included on the Atlas Record Form by writing the number to the **right** of the species name on the sheet. When doing this, please take care not to colour in the bubble of the species in the next column. If you submit the data via the Birddata website (www.birdata.com.au), there is a special field for you to include bird counts.
- A completed Atlas Record Form should be submitted for all 2-hectare searches, even if no birds were recorded. This can be done by sending in a paper form (see enclosed) or electronically, via Birddata (www.birdata.com.au).
- Write in the number of each species present

Timing of surveys

- Each site should be surveyed four times per year, once in each season: summer (Dec.–Feb.); autumn (Mar.–May); winter (June–Aug.); and spring (Sept.–Nov.).
- Habitat forms should be completed whenever repeat surveys are planned.

Some helpful tips

- Take your time — don't rush. By walking slowly you will see more birds, especially the quiet or skulking ones.
- Make sure to listen for birds calling. These records are as valuable as those of birds seen. Take time to follow up unfamiliar calls (never ignore them!).
- Remember that there are a number of excellent mimics in the Burnett Mary region, such as Olive-backed Orioles, Figbirds and Satin Bowerbirds, so it is always wise to make sure that the calls that you hear are what they seem.
- Don't just record the obvious species (e.g. large birds or birds that are calling vociferously). You should be aware that there will also be less-obvious species present, so look and listen carefully, and make sure to check all likely areas.
- Listen for noises other than bird calls. For example, Crested Shrike-tits are often first detected by the sound of them tearing at bark with their stout beaks; and parrots quietly feeding in the treetops are often first detected by the sound of dropped seed-pods falling to the ground.
- Be quiet. It lets you hear more birds and disturbs them less. However, talk in your normal voice. Never shout, and try not to whisper, as sibilant noises tend to disturb birds, which may use similar sounds to indicate alarm or aggression.
- Don't wear clothing that rustles.
- Be aware that when birdwatching beside a busy road bird calls will be more difficult to hear, as they tend to be drowned out by traffic noise.
- Try to conduct surveys early in the morning. Birds are more active then, and tend to call more often.
- Try to avoid birdwatching on windy days. Wind makes it more difficult to hear birds calling, and they are also less active in these conditions.
- Try to avoid birdwatching on hot days. Birds are inactive during the heat of the day, and are difficult to find. If you must conduct surveys on hot days, do it early in the morning or late in the afternoon, when it is cooler and birds are likely to be more active.
- Try not to go birdwatching in large groups; large groups should be divided up into two or three smaller ones.
- Birds are more easily detected in open habitats than in more heavily wooded ones. However, don't be lulled into a false sense of security in open areas, as cryptic species can be easily missed. In all habitats, take your time and you will see more birds.

How to go birdwatching in an open forest

- Scan the ground for any birds
- Check out the shrubs in the undergrowth
- Check out the trunks of the larger trees, and the lower branches
- Check out the birds in the canopy of the trees

- If there are any clearings, check the airspace above for aerial species such as raptors, swallows or swifts

Bird monitoring – Some safety and logistical tips

Although bird watching is a safe and enjoyable pastime, there are a few things to be mindful of when out in the field. We want to make sure that all of our volunteers have an enjoyable and, most importantly, safe bird watching experience. Please take the following precautions next time you set out to conduct NRM surveys.

- Please respect private property. **You must always ask for permission before entering private property.** If you wish to enter any of the survey sites on private property, you must make arrangements well beforehand.
- When on private property, make sure you leave gates as you found them, and do not disturb stock. Do not camp, light fires or go fishing when on private property **without the express permission of the land-owner**. And please be discreet about good spots on private property – don't publicise the location.
- Make sure your vehicle is in good working order.
- It is easy to underestimate the distance between sites, so please make sure that you have ample fuel for your return journey.
- When surveying sites near roads, make sure you park well off the road, so that traffic is not disrupted. Make sure your vehicle is visible to other traffic when it is parked. Also make sure it is not parked across a driveway or other access point.
- When surveying sites along roadsides, walk along the boundary of the paddock, rather than along the edge of a busy road.
- Let someone reliable know where you are going and when you expect to return.
- Carry appropriate maps with you and where possible a GPS unit as well.
- Do not wander too far from your car. It is easy to become disorientated in relatively featureless landscapes.
- Always carry plenty of water with you, especially during warm times of the year.
- Take precautions against the heat and sun by conducting your surveys in the morning or late afternoon, wearing a hat and sunscreen. Birds are more active at those times, too.
- Do not survey during days of Total Fire Ban (for your own safety), or on days when it is too hot (when birds are generally inactive and often more difficult to detect).
- Be mindful of snakes and carry a fully-equipped first aid kit.
- Always wear sturdy boots or shoes.
- Please let us know about the sites you are surveying. For example, are the sites too difficult to find? Or are the locals unco-operative? If you let us know about problem sites we can try to have them replaced with more suitable ones.

Nest Record Scheme

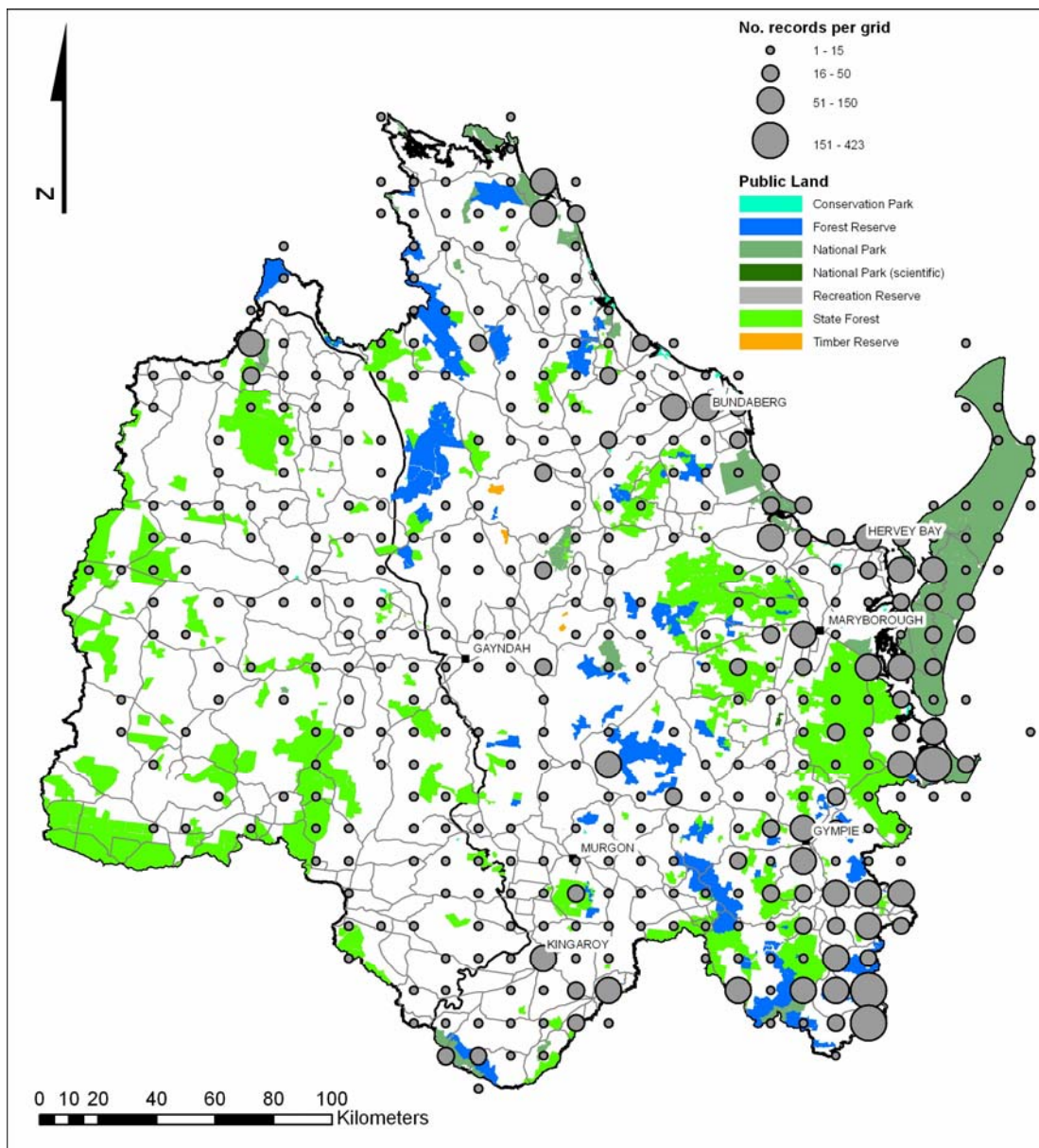
While you're atlasing away, don't forget to record any active nest sightings.

The Birds Australia Nest Record Scheme is used to collect information about breeding and nest characteristics of Australian birds. Data such as egg laying dates, clutch and brood sizes and nesting success is used by Birds Australia and other research organizations in population monitoring studies and to investigate topics such as the effects of climate and land use change on the breeding of Australian birds. This information also forms the basis for the biological information in publications such as the *Handbook of Australian, New Zealand and Antarctic Birds*. Even information on common species nesting in your garden can be valuable.

Scheme details and record forms can be downloaded from the Birds Australia website www.birdsaustralia.com.au/projects/NRS or contact the national office.

Which areas have already been surveyed?

The accompanying map of the Burnett Mary region shows where the bird-monitoring surveys have already been conducted. The surveys are most sparsely scattered in the western half of the region, while most records are from the coastal and subcoastal areas. Participants are encouraged to conduct their surveys in the west of the region, but data from surveys anywhere in the region will be gratefully accepted.



KEY TO SPECIES NAMES AND ATLAS NUMBERS

RATITE

- 928 Ostrich
002 Southern Cassowary
001 Emu *

MOUND-BUILDER

- 008 Australian Brush-turkey
*
007 Malleefowl
006 Orange-footed Scrubfowl
*

QUAIL, PHEASANT etc

- 009 Stubble Quail *
011 Brown Quail *
012 King Quail
902 Red Junglefowl
950 Common Pheasant
903 Indian Peafowl
778 Wild Turkey
901 Californian Quail

MAGPIE GOOSE,

WHISTLING- DUCK, STIFF-TAILED DUCK

- 199 Magpie Goose *
205 Plumed Whistling-Duck *
204 Wandering Whistling-Duck *
*
745 Spotted Whistling-Duck
216 Blue-billed Duck *
217 Musk Duck *
214 Freckled Duck

SWAN, GOOSE

- 906 Mute Swan
203 Black Swan *
799 Canada Goose
198 Cape Barren Goose *

SHELDUCK

- 207 Australian Shelduck *
798 Paradise Shelduck
206 Radjah Shelduck *

DUCK

- 202 Australian Wood Duck *
200 Cotton Pygmy-goose *
201 Green Pygmy-goose *
948 Mallard *
208 Pacific Black Duck *
212 Australasian Shoveler *
905 Northern Shoveler
211 Grey Teal *
210 Chestnut Teal *
800 Northern Pintail
209 Garganey
213 Pink-eared Duck *
215 Hardhead *

GREBE

- 061 Australasian Grebe *
843 Eurasian little Grebe
062 Hoary-headed Grebe *
060 Great Crested Grebe *

PENGUIN

- 927 King Penguin
804 Emperor Penguin
926 Gentoo Penguin
924 Adelle Penguin
925 Chinstrap Penguin
003 Rockhopper Penguin
004 Fiordland Penguin
923 Snares Penguin
959 Erect-crested Penguin
968 Macaroni Penguin
005 Little Penguin *
858 Magellanic Penguin

PETREL, FULMAR, PRION

- 085 Common Diving-Petrel
910 South Georgian Diving-Petrel
929 Southern Giant-Petrel
937 Northern Giant-Petrel
074 Southern Fulmar
949 Antarctic Petrel
080 Cape Petrel
984 Snow Petrel
935 Kerguelen Petrel
920 Tahiti Petrel
075 Great-winged Petrel
077 White-headed Petrel
971 Providence Petrel
922 Kermadec Petrel
921 Herald Petrel
076 Soft-plumaged Petrel
919 Mottled Petrel
810 Juan Fernandez Petrel
774 White-necked Petrel
775 Barau's Petrel
955 Black-winged Petrel
918 Cook's Petrel
078 Gould's Petrel
081 Blue Petrel
082 Broad-billed Prion
941 Salvin's Prion
084 Antarctic Prion
942 Slender-billed Prion
083 Fairy Prion
947 Fulmar Prion
776 Bulwer's Petrel
915 White-chinned Petrel
916 Westland Petrel
917 Black Petrel
073 Grey Petrel

SHEARWATER

- 853 Streaked Shearwater
069 Wedge-tailed Shearwater
975 Buller's Shearwater
072 Flesh-footed Shearwater
772 Pink-footed Shearwater
771 Great Shearwater
070 Sooty Shearwater
071 Short-tailed Shearwater *

ALBATROSS

- 086 Wandering Albatross
974 Royal Albatross
088 Black-browed Albatross *
*
091 Shy Albatross
090 Grey-headed Albatross
089 Yellow-nosed Albatross
931 Buller's Albatross
092 Sooty Albatross
093 Light-mantled Sooty Albatross

STORM PETREL

- 063 Wilson's Storm-Petrel
064 Grey-backed Storm-Petrel
065 White-faced Storm-Petrel
066 Black-bellied Storm-Petrel
944 White-bellied Storm-Petrel
911 Leach's Storm-Petrel
802 Matsudaira's Storm-Petrel

TROPICBIRD

- 107 Red-tailed Tropicbird
108 White-tailed Tropicbird

GANNET, BOOBY

- 854 Abbott's Booby
825 Cape Gannet
104 Australasian Gannet *
105 Masked Booby
103 Red-footed Booby
102 Brown Booby

CORMORANT, SHAG,

PELICAN

- 101 Darter *
100 Little Pied Cormorant *
098 Black-faced Cormorant *
099 Pied Cormorant *
097 Little Black Cormorant *
096 Great Cormorant *
970 Imperial Shag
106 Australian Pelican *

FRIGATEBIRD

- 094 Great Frigatebird
095 Lesser Frigatebird
909 Christmas Frigatebird

HERON, EGRET,

BITTERN, IBIS,

SPOONBILL

- 188 White-faced Heron *
185 Little Egret *
191 Eastern Reef Egret *
189 White-necked Heron *
184 Great-billed Heron
190 Pied Heron *
187 Great Egret *
186 Intermediate Egret *
977 Cattle Egret *
193 Striated Heron *
796 Black-crowned Night Heron
192 Nankeen Night Heron *
797 Malayan Night Heron
195 Little Bittern
907 Yellow Bittern
196 Black Bittern
197 Australasian Bittern *
178 Glossy Ibis *
179 Australian White Ibis *
180 Straw-necked Ibis *
181 Royal Spoonbill *
182 Yellow-billed Spoonbill *
183 Black-necked Stork *
777 Greater Flamingo

OSPREY, HAWK, EAGLE

- 241 Osprey *
234 Pacific Baza *
232 Black-shouldered Kite *
233 Letter-winged Kite
230 Square-tailed Kite
231 Black-breasted Buzzard *
*
229 Black Kite *
228 Whistling Kite *
227 Brahminy Kite *
226 White-bellied Sea-Eagle *
*
218 Spotted Harrier *
219 Swamp Harrier *
221 Brown Goshawk *
220 Grey Goshawk *
222 Collared Sparrowhawk *

- 223 Red Goshawk
801 Gurney's Eagle
224 Wedge-tailed Eagle *
225 Little Eagle *

FALCON

- 239 Brown Falcon *
235 Australian Hobby *
236 Grey Falcon
238 Black Falcon *
237 Peregrine Falcon *
240 Nankeen Kestrel *

CRANE

- 898 Sarus Crane
177 Brolga *

CRAKE, RAIL, GALLINULE

- 048 Red-necked Crake
900 Red-legged Crake
046 Buff-banded Rail *
966 Lord Howe Woodhen
045 Lewin's Rail
053 Bush-hen
768 White-breasted Waterhen
050 Bailion's Crake
049 Australian Spotted Crake *

- 715 Ruddy-breasted Crake
051 Spotless Crake
052 White-browed Crake
047 Chestnut Rail
711 Watercock

- 058 Purple Swamphen *
056 Dusky Moorhen *
055 Black-tailed Native-hen *

- 054 Tasmanian Native-hen *
059 Eurasian Coot *

BUSTARD

- 176 Australian Bustard *

BUTTON-QUAIL

- 013 Red-backed Button-quail
018 Little Button-quail *
019 Red-chested Button-quail
015 Chestnut-backed Button-quail
016 Buff-breasted Button-quail
014 Painted Button-quail *
017 Black-breasted Button-quail

PLAINS WANDERER

- 020 Plains-wanderer

SNIFE

- 168 Latham's Snipe *
852 Pin-tailed Snipe
169 Swinhoe's Snipe

GODWIT, CURLEW,

'SHANKS', ALLIES

- 152 Black-tailed Godwit *
815 Hudsonian Godwit
153 Bar-tailed Godwit *
151 Little Curlew
150 Whimbrel *
149 Eastern Curlew *
892 Upland Sandpiper
820 Spotted Redshank
891 Common Redshank
159 Marsh Sandpiper *
158 Common Greenshank *
809 Lesser Yellowlegs
154 Wood Sandpiper
160 Terek Sandpiper *
157 Common Sandpiper *
155 Grey-tailed Tattler *
156 Wandering Tattler
129 Ruddy Turnstone
939 Asian Dowitcher
764 Short-billed Dowitcher

KNOT, STINT,

ARCTIC SANDPIPERS,

ALLIES

- 165 Great Knot *
164 Red Knot *
166 Sanderling *
857 Little Stint
162 Red-necked Stint *
965 Long-toed Stint
849 White-rumped Sandpiper
890 Baird's Sandpiper
978 Pectoral Sandpiper
163 Sharp-tailed Sandpiper *
888 Dunlin
161 Curlew Sandpiper *
827 Stilt Sandpiper
887 Buff-breasted Sandpiper
167 Broad-billed Sandpiper
934 Ruff
886 Wilson's Phalarope
932 Red-necked Phalarope
835 Grey Phalarope
170 Painted Snipe

JACANA

- 171 Comb-crested Jacana *
897 Pheasant-tailed Jacana
767 Black-faced Sheathbill

STONE-CURLEW

- 174 Bush Stone-curlew *
175 Beach Stone-curlew

OYSTERCATCHER

- 744 South Island Pied Oystercatcher
130 Pied Oystercatcher *
131 Sooty Oystercatcher *

STILT, AVOCET

- 146 Black-winged Stilt *
147 Banded Stilt *
148 Red-necked Avocet *

POLOVER, DOTTEREL

- 137 Pacific Golden Plover *
136 Grey Plover *
895 Ringed Plover
851 Little Ringed Plover
770 Kentish Plover
143 Red-capped Plover *
140 Double-banded Plover *
139 Lesser Sand Plover *
141 Greater Sand Plover *
894 Caspian Plover
142 Oriental Plover

145 Inland Dotterel
144 Black-fronted Dotterel *
138 Hooded Plover *
132 Red-kneed Dotterel *

LAPWING

135 Banded Lapwing *
133 Masked Lapwing *

PRATINCOLE

172 Oriental Pratincole
173 Australian Pratincole *

SKUA, JAEGER

980 Great Skua
979 South Polar Skua
945 Pomarine Jaeger
128 Arctic Jaeger
933 Long-tailed Jaeger

GULL

126 Pacific Gull *
856 Black-tailed Gull
981 Kelp Gull *
125 Silver Gull *
784 Black-headed Gull
785 Laughing Gull
885 Franklin's Gull
783 Sabine's Gull

TERN, NODDY

111 Gull-billed Tern *
112 Caspian Tern *
116 Lesser Crested Tern
115 Crested Tern *
113 Roseate Tern
114 White-fronted Tern
119 Black-naped Tern
953 Common Tern *
952 Arctic Tern
985 Antarctic Tern
117 Little Tern *
118 Fairy Tern *
121 Bridled Tern
120 Sooty Tern
110 Whiskered Tern *
109 White-winged Black Tern
884 Black Tern
122 Common Noddy
124 Black Noddy
123 Lesser Noddy
982 Grey Ternlet
972 White Tern

PIGEON, DOVE

957 Rock Dove (Feral Pigeon)
*
028 White-headed Pigeon *
988 Laughing Turtle-Dove *
989 Spotted Turtle-Dove *
029 Brown Cuckoo-Dove *
033 Emerald Dove *
034 Common Bronzewing *
035 Brush Bronzewing *
036 Flock Bronzewing
043 Crested Pigeon *
042 Spinnifex Pigeon *
040 Partridge Pigeon
039 Squatter Pigeon *
037 White-quilled Rock-Pigeon
038 Chestnut-quilled Rock-Pigeon
031 Diamond Dove *
030 Peaceful Dove *
032 Bar-shouldered Dove *
044 Wonga Pigeon *
024 Banded Fruit-Dove
025 Wompoo Fruit-Dove *
023 Superb Fruit-Dove
021 Rose-crowned Fruit-Dove
769 Elegant Imperial-Pigeon
805 Christmas Is. Imperial-Pigeon
793 Collared Imperial-Pigeon
026 Pied Imperial-Pigeon *
027 Topknot Pigeon *

COCKATOO, CORELLA

263 Palm Cockatoo
264 Red-tailed Black-Cockatoo *
*
265 Glossy Black-Cockatoo *
267 Yellow-tailed Black-Cockatoo *
794 Short-billed Black-Cockatoo *
266 Long-billed Black-Cockatoo *
268 Gang-gang Cockatoo *
273 Galah *
272 Long-billed Corella *
795 Western Corella
271 Little Corella *
270 Major Mitchell's Cockatoo *
269 Sulphur-crested Cockatoo *
274 Cockatiel *

LORIKEET

254 Rainbow Lorikeet *
256 Scaly-breasted Lorikeet
*
257 Varied Lorikeet *
258 Musk Lorikeet *
260 Little Lorikeet *
259 Purple-crowned Lorikeet *

PARROT, ROSELLA

275 Eclectus Parrot
276 Red-cheeked Parrot
261 Double-eyed Fig-Parrot
281 Australian King-Parrot *
280 Red-winged Parrot *
277 Superb Parrot
278 Regent Parrot *
279 Princess Parrot
285 Green Rosella *
282 Crimson Rosella *
288 Eastern Rosella *
286 Pale-headed Rosella *
287 Northern Rosella *
289 Western Rosella *
294 Australian Ringneck *
290 Red-capped Parrot *
297 Blue Bonnet *
309 Swift Parrot
295 Red-rumped Parrot *
296 Mulga Parrot *
300 Golden-shouldered Parrot
301 Hooded Parrot
808 Red-crowned Parakeet
310 Budgerigar *
304 Bourke's Parrot
306 Blue-winged Parrot *
307 Elegant Parrot *
308 Rock Parrot
305 Orange-bellied Parrot
302 Turquoise Parrot *
303 Scarlet-chested Parrot
311 Ground Parrot
312 Night Parrot

CUCKOO, COUCAL

336 Oriental Cuckoo
337 Pallid Cuckoo *
339 Brush Cuckoo *
340 Chestnut-breasted Cuckoo
338 Fan-tailed Cuckoo *
341 Black-eared Cuckoo *
342 Horsfield's Bronze-Cuckoo *
*
344 Shining Bronze-Cuckoo *
345 Little Bronze-Cuckoo
346 Gould's Bronze-Cuckoo
347 Common Koel *
791 Long-tailed Cuckoo
348 Channel-billed Cuckoo *
349 Pheasant Coucal *

HAWK OWL

248 Powerful Owl
247 Rufous Owl
246 Barking Owl *
242 Southern Boobook *

823 Brown Hawk-Owl
807 Moluccan Hawk-Owl

BARN OWL

253 Sooty Owl
730 Lesser Sooty Owl
250 Masked Owl
249 Barn Owl *
252 Grass Owl

FROGMOUTH

313 Tawny Frogmouth *
316 Papuan Frogmouth
314 Marbled Frogmouth

NIGHTJAR

330 White-throated Nightjar
331 Spotted Nightjar *
332 Large-tailed Nightjar
765 Savanna Nightjar
317 Australian Owlet-nightjar *

SWIFT

882 Glossy Swiftlet
333 White-rumped Swiftlet
881 Uniform Swiftlet
334 White-throated Needletail
*
335 Fork-tailed Swift *
828 House Swift

KINGFISHER

319 Azure Kingfisher *
320 Little Kingfisher
328 Buff-breasted Paradise-Kingfish.
322 Laughing Kookaburra *
323 Blue-winged Kookaburra *
*
321 Yellow-billed Kingfisher
324 Forest Kingfisher *
325 Red-backed Kingfisher *
326 Sacred Kingfisher *
327 Collared Kingfisher *

BEE-EATER, ROLLER

329 Rainbow Bee-eater *
318 Dollarbird *

PITTA

353 Red-bellied Pitta
880 Blue-winged Pitta
352 Noisy Pitta *
354 Rainbow Pitta

LYREBIRD

351 Albert's Lyrebird
350 Superb Lyrebird *

SCRUB-BIRD

355 Rufous Scrub-bird
356 Noisy Scrub-bird

TREECREEPER

558 White-throated Treecreeper *
561 White-browed Treecreeper
*
560 Red-browed Treecreeper *
*
555 Brown Treecreeper *
562 Black-tailed Treecreeper
*
556 Rufous Treecreeper *

FAIRY-WREN, GRASSWREN

542 Purple-crowned Fairy-wren
*
529 Superb Fairy-wren *
532 Splendid Fairy-wren *
536 Variegated Fairy-wren *
539 Lovely Fairy-wren
540 Blue-breasted Fairy-wren
538 Red-winged Fairy-wren

535 White-winged Fairy-wren
*
541 Red-backed Fairy-wren *
526 Southern Emu-wren *
527 Mallee Emu-wren
528 Rufous-crowned Emu-wren

871 Grey Grasswren
518 Black Grasswren
516 White-throated Grasswren
517 Carpenterian Grasswren
513 Striated Grasswren
515 Eyrean Grasswren
512 Thick-billed Grasswren
511 Dusky Grasswren

PARDALOTE

565 Spotted Pardalote *
571 Forty-spotted Pardalote
570 Red-browed Pardalote *
976 Striated Pardalote *

BRISTLEBIRD

519 Eastern Bristlebird
520 Western Bristlebird
521 Rufous Bristlebird

SCRUBWREN & ALLIES

506 Pilotbird *
505 Rockwarbler *
496 Fernwren
493 Yellow-throated Scrubwren *
488 White-browed Scrubwren *
*
495 Tasmanian Scrubwren *
946 Atherton Scrubwren
494 Large-billed Scrubwren *
490 Tropical Scrubwren
487 Scrubtit *
498 Chestnut-rumped Heathwren *
499 Shy Heathwren *
500 Striated Fieldwren *
502 Rufous Fieldwren
497 Redthroat *
504 Speckled Warbler *
465 Weebill *
454 Brown Gerygone *
958 Norfolk Island Gerygone
461 Dusky Gerygone
460 Mangrove Gerygone *
463 Western Gerygone *
457 Large-billed Gerygone
458 Green-backed Gerygone
456 Fairy Gerygone *
453 White-throated Gerygone *

474 Mountain Thornbill
475 Brown Thornbill *
476 Inland Thornbill *
473 Tasmanian Thornbill *
481 Chestnut-rumped Thornbill *

480 Slaty-backed Thornbill
472 Western Thornbill *
484 Buff-rumped Thornbill *
482 Slender-billed Thornbill
486 Yellow-rumped Thornbill *

471 Yellow Thornbill *
470 Striated Thornbill *
466 Southern Whiteface *
468 Chestnut-breasted Whiteface
469 Banded Whiteface

HONEYEATER

638 Red Wattlebird *
639 Yellow Wattlebird *
710 Little Wattlebird *
640 Spiny-cheeked Honeyeater
*
585 Striped Honeyeater *
642 Helmeted Friarbird *
644 Silver-crowned Friarbird *
*
645 Noisy Friarbird *
646 Little Friarbird *
603 Regent Honeyeater

641 Blue-faced Honeyeater *
633 Bell Miner *
634 Noisy Miner *
635 Yellow-throated Miner *
967 Black-eared Miner
615 Macleay's Honeyeater
629 Tawny-breasted Honeyeater
605 Lewin's Honeyeater *
606 Yellow-spotted Honeyeater
*
612 Graceful Honeyeater
607 White-lined Honeyeater
611 Bridled Honeyeater
634 Eungella Honeyeater
614 Yellow-faced Honeyeater

608 Singing Honeyeater *
609 Varied Honeyeater
610 Mangrove Honeyeater
628 White-gaped Honeyeater *

626 Yellow Honeyeater *
617 White-eared Honeyeater

616 Yellow-throated Honeyeater *
619 Yellow-tufted Honeyeater

620 Purple-gaped Honeyeater

621 Grey-headed Honeyeater

622 Yellow-plumed Honeyeater

623 Grey-fronted Honeyeater

613 Fuscous Honeyeater *
624 Yellow-tinted Honeyeater

625 White-plumed Honeyeater

580 Black-chinned Honeyeater

582 Strong-billed Honeyeater

583 Brown-headed Honeyeater

579 White-throated Honeyeater *

578 White-naped Honeyeater

584 Black-headed Honeyeater

604 Green-backed Honeyeater
597 Brown Honeyeater *

627 White-streaked Honeyeater

598 Painted Honeyeater

630 Crescent Honeyeater *

631 New Holland Honeyeater

632 White-cheeked Honeyeater

594 White-fronted Honeyeater

593 Tawny-crowned Honeyeater *

595 Brown-backed Honeyeater

596 Bar-breasted Honeyeater

600 Rufous-banded Honeyeater

601 Rufous-throated Honeyeater *

599 Grey Honeyeater

591 Eastern Spinebill *
592 Western Spinebill *

588 Banded Honeyeater *
589 Black Honeyeater

602 Pied Honeyeater

590 Dusky Honeyeater *
587 Red-headed Honeyeater *

586 Scarlet Honeyeater *

ROBIN, SCRUB-ROBIN
 377 Jacky Winter *
 379 Lemon-bellied Flycatcher *

 395 Yellow-legged Flycatcher
 380 Scarlet Robin *
 381 Red-capped Robin *
 382 Flame Robin *
 384 Rose Robin *
 383 Pink Robin *
 385 Hooded Robin *
 386 Dusky Robin *
 396 Pale-yellow Robin *
 397 White-faced Robin
 392 Eastern Yellow Robin *
 394 Western Yellow Robin *
 387 White-breasted Robin *
 388 Mangrove Robin
 390 White-browed Robin
 389 Grey-headed Robin
 442 Northern Scrub-robin
 441 Southern Scrub-robin *

LOGRUNNER
 434 Logrunner
 435 Chowchilla

BABBLER
 443 Grey-crowned Babbler *
 445 White-browed Babbler *
 938 Hall's Babbler
 446 Chestnut-crowned Babbler *

QUAIL-THRUSH & ALLIES
 421 Eastern Whipbird *
 422 Western Whipbird
 866 Chirruping Wedgebill *
 865 Chiming Wedgebill *
 436 Spotted Quail-thrush *
 437 Chestnut Quail-thrush *
 439 Cinnamon Quail-thrush *
 438 Chestnut-breasted Quail-thrush
 549 Varied Sittella *

WHISTLER, SHRIKE-THRUSH
 416 Crested Shrike-tit *
 419 Crested Bellbird *
 405 Olive Whistler *
 402 Red-lored Whistler
 403 Gilbert's Whistler
 398 Golden Whistler *
 400 Mangrove Golden Whistler
 406 Grey Whistler
 401 Rufous Whistler *
 404 White-breasted Whistler
 413 Little Shrike-thrush *

414 Bower's Shrike-thrush
 411 Sandstone Shrike-thrush
 408 Grey Shrike-thrush *

FLYCATCHER, FANTAIL, DRONGO
 368 Yellow-breasted Boatbill
 373 Black-faced Monarch *
 374 Black-winged Monarch
 375 Spectacled Monarch *
 376 White-eared Monarch
 371 Frilled Monarch
 370 Pied Monarch
 367 Broad-billed Flycatcher
 365 Leaden Flycatcher *
 366 Satin Flycatcher *
 372 Shining Flycatcher *
 728 Restless Flycatcher *
 415 Magpie-lark *
 362 Rufous Fantail *
 361 Grey Fantail *
 826 Mangrove Grey Fantail
 363 Northern Fantail *
 364 Willie Wagtail *
 673 Spangled Drongo *

CUCKOO-SHRIKE, TRILLER
 424 Black-faced Cuckoo-shrike *

 428 Barred Cuckoo-shrike
 425 White-bellied Cuckoo-shrike *
 429 Cicadabird *
 423 Ground Cuckoo-shrike *
 430 White-winged Triller *
 431 Varied Triller *

ORIOLE, FIGBIRD
 672 Yellow Oriole *
 671 Olive-backed Oriole *
 432 Figbird *

WOODSWALLOW
 543 White-breasted Woodswallow *
 544 Masked Woodswallow *
 545 White-browed Woodswallow *
 546 Black-faced Woodswallow *
 547 Dusky Woodswallow *
 548 Little Woodswallow *

BUTCHERBIRD, CURRAWONG
 701 Black Butcherbird *
 702 Grey Butcherbird *
 704 Black-backed Butcherbird

700 Pied Butcherbird *
 705 Australian Magpie *
 694 Pied Currawong *
 696 Black Currawong *
 697 Grey Currawong *

BIRDS OF PARADISE
 686 Paradise Riflebird
 687 Victoria's Riflebird
 688 Magnificent Riflebird
 689 Trumpet Manucode

RAVEN, CROW
 930 Australian Raven *
 868 Forest Raven *
 954 Little Raven *
 691 Little Crow *
 692 Torresian Crow *
 837 Crow & Raven Species

MUD-NEST BUILDER
 693 White-winged Chough *
 675 Apostlebird *

BOWERBIRD
 677 Spotted Catbird
 676 Green Catbird *
 678 Tooth-billed Bowerbird
 685 Golden Bowerbird
 684 Regent Bowerbird
 679 Satin Bowerbird *
 680 Spotted Bowerbird *
 681 Western Bowerbird
 683 Great Bowerbird *
 682 Fawn-breasted Bowerbird

LARK
 648 Singing Bushlark *
 993 Skylark *

PIPIT, WAGTAIL
 647 Richard's Pipit *
 766 Red-throated Pipit
 877 Yellow Wagtail
 876 Citrine Wagtail
 875 Grey Wagtail
 874 White Wagtail
 781 Black-backed Wagtail

SPARROW, FINCH, MANNIKIN
 995 House Sparrow *
 994 Eurasian Tree Sparrow *
 653 Zebra Finch *
 655 Double-barred Finch *
 666 Long-tailed Finch *
 667 Black-throated Finch

669 Masked Finch *
 664 Crimson Finch *
 663 Star Finch
 661 Plum-headed Finch *
 662 Red-browed Finch *
 652 Diamond Firetail *
 650 Beautiful Firetail *
 651 Red-eared Firetail *
 654 Painted Finch
 983 Nutmeg Mannikin *
 658 Yellow-rumped Mannikin
 657 Chestnut-breasted Mannikin *
 806 Java Sparrow
 659 Pictorella Mannikin
 660 Blue-faced Parrot-Finch
 670 Gouldian Finch
 788 Common Chaffinch
 997 European Greenfinch *
 996 European Goldfinch *
 790 Common Redpoll
 789 Yellowhammer
 572 Yellow-bellied Sunbird *
 564 Mistletoebird *
 751 Red-capped Flowerpecker

SWALLOW, MARTIN
 358 White-backed Swallow *
 879 Barn Swallow
 357 Welcome Swallow *
 787 Red-rumped Swallow
 359 Tree Martin *
 360 Fairy Martin *
 990 Red-whiskered Bulbul *

OLD WORLD WARBLER
 524 Clamorous Reed-Warbler *

 872 Oriental Reed-Warbler
 831 Arctic Warbler
 523 Tawny Grassbird *
 522 Little Grassbird *
 507 Spinifexbird
 509 Rufous Songlark *
 508 Brown Songlark *
 969 Zitting Cisticola
 525 Golden-headed Cisticola *

WHITE-EYE
 956 Christmas Island White-eye
 577 Pale White-eye
 576 Yellow White-eye
 574 Silveryeye *
 960 Slender-billed White-eye
 961 White-chested White-eye

THRUSH

779 Bassian Thrush *
 780 Russet-tailed Thrush *
 991 Common Blackbird *
 936 Island Thrush
 992 Song Thrush

STARLING, MYNA
 674 Metallic Starling
 724 Singing Starling
 999 Common Starling *
 998 Common Myna *

ADDITIONAL NUMBERS FOR HYBRIDS, ESCAPEES OR UNIDENTIFIED SPECIES

GAME BIRDS
 752 Green Junglefowl
 2505 Helmeted Guineafowl
 2508 Rock Partridge

WILDFOWL
 838 Domestic Goose
 2502 Greylag Goose
 2507 Domestic Duck
 816 P. Black Duck/Mallard hybrid
 2501 Muscovy Duck

SEABIRD
 843 Prion species

WADER
 839 Snipe species
 840 Tattler species

PIGEON
 940 Barbary Dove
 2504 Collared Dove

COCKATOO, PARROT
 841 White-tailed Black-Cockatoo sp
 818 Corella species
 2503 Ring-necked Parakeet

FAIRY-WREN
 538 Chestnut-shouldered Fairy-wren sp

RAVEN, CROW
 837 Crow & Raven species